

# Animal Cell Coloring

**Directions:** Color each part of the animal and plant cell its designated color.

Cell Membrane(light brown)

Cytoplasm (light yellow)

Nucleoplasm (pink)

Nuclear Membrane(dark brown)

Nucleolus (black)

Golgi Apparatus (pink)

Flagella (red/blue striped)

Rough Endoplasmic Reticulum (dark blue)

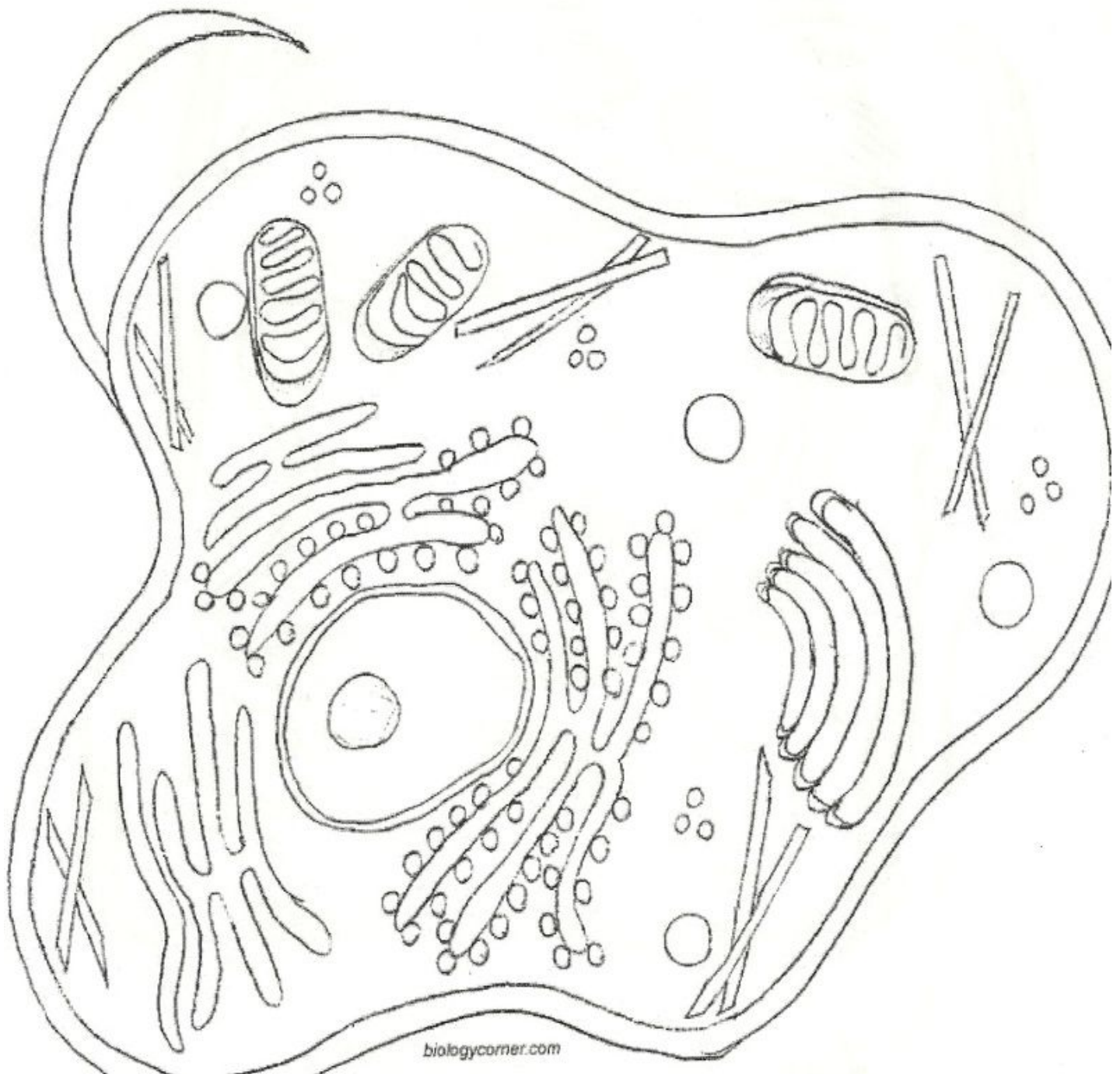
Smooth Endoplasmic Reticulum( light blue)

Mitochondria (orange)

Lysosome (purple)

Microtubules (dark green)

Ribosome (red)



biologycorner.com