

Name _____

Animal Cell Coloring

Cell Membrane (brown)

Cytoplasm (blue)

Nuclear Membrane (purple)

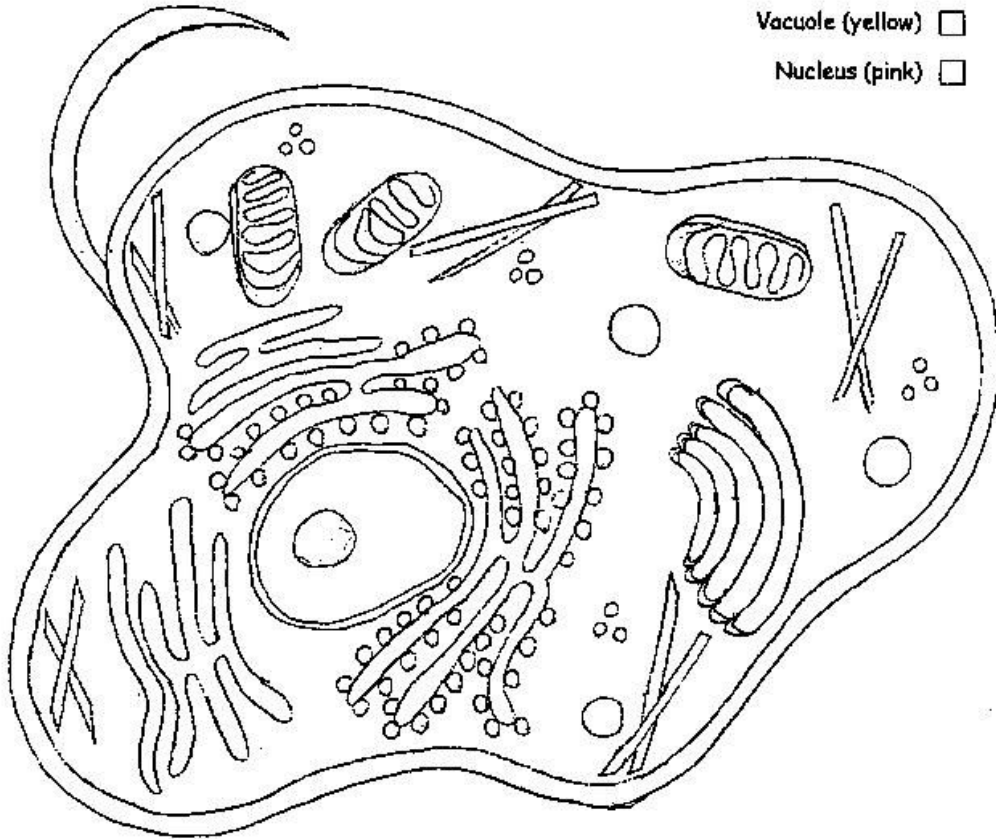
Ribosome (red)

Endoplasmic Reticulum (green)

Mitochondria (orange)

Vacuole (yellow)

Nucleus (pink)



Briefly describe the function of the cell parts.

1. Cell Membrane _____
2. Endoplasmic Reticulum _____
3. Ribosome _____
4. Mitochondria _____
5. Nucleus _____