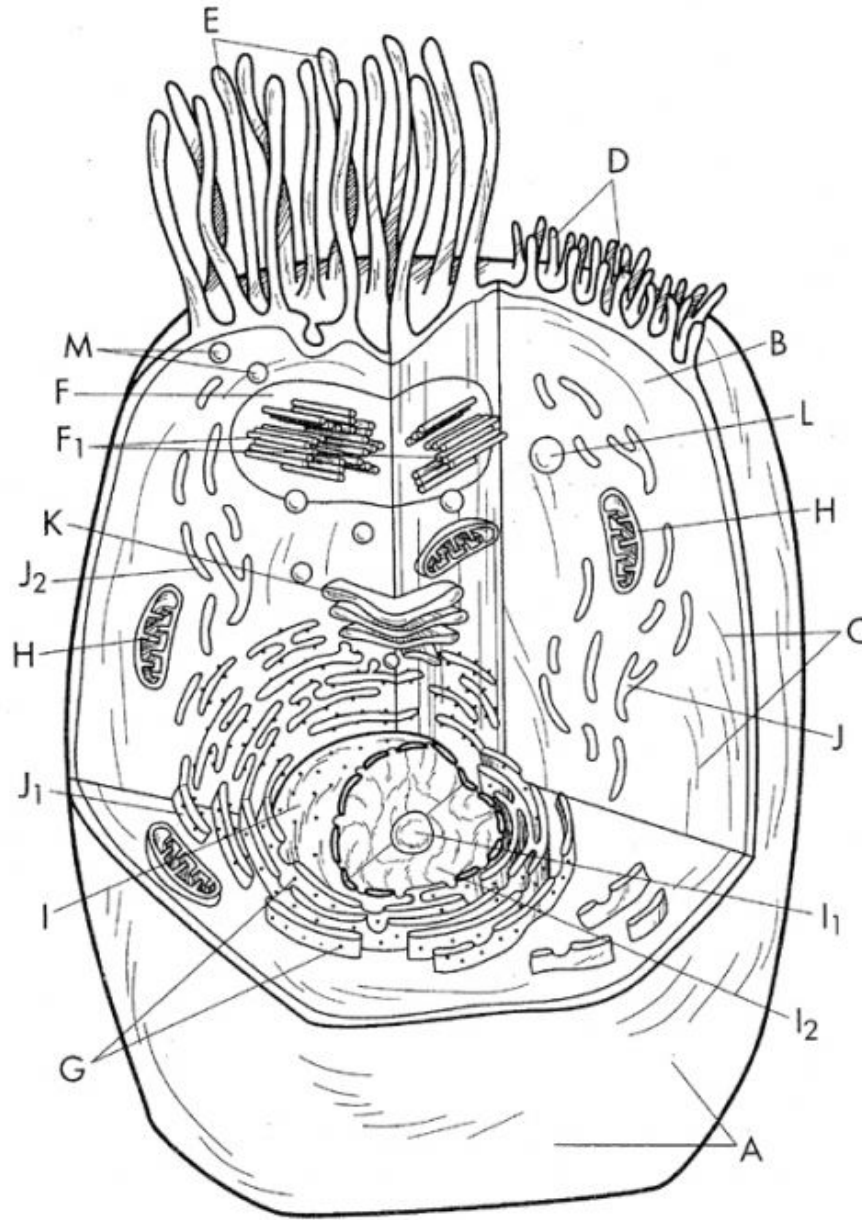


# The Animal Cell



The Animal Cell		
○ Cell Membrane.....A	○ Centrioles.....F <sub>1</sub>	○ Endoplasmic Reticulum...J
○ Cytosol (Cytoplasm)....B	○ Ribosomes.....G	○ Rough ER.....J <sub>1</sub>
○ Cytoskeleton.....C	○ Mitochondrion.....H	○ Smooth ER.....J <sub>2</sub>
○ Microvilli.....D	○ Nucleus.....I	○ Golgi Body.....K
○ Cilia.....E	○ Nucleolus.....I <sub>1</sub>	○ Lysosome.....L
○ Centrosome.....F	○ Nucleoplasm.....I <sub>2</sub>	○ Peroxisome.....M