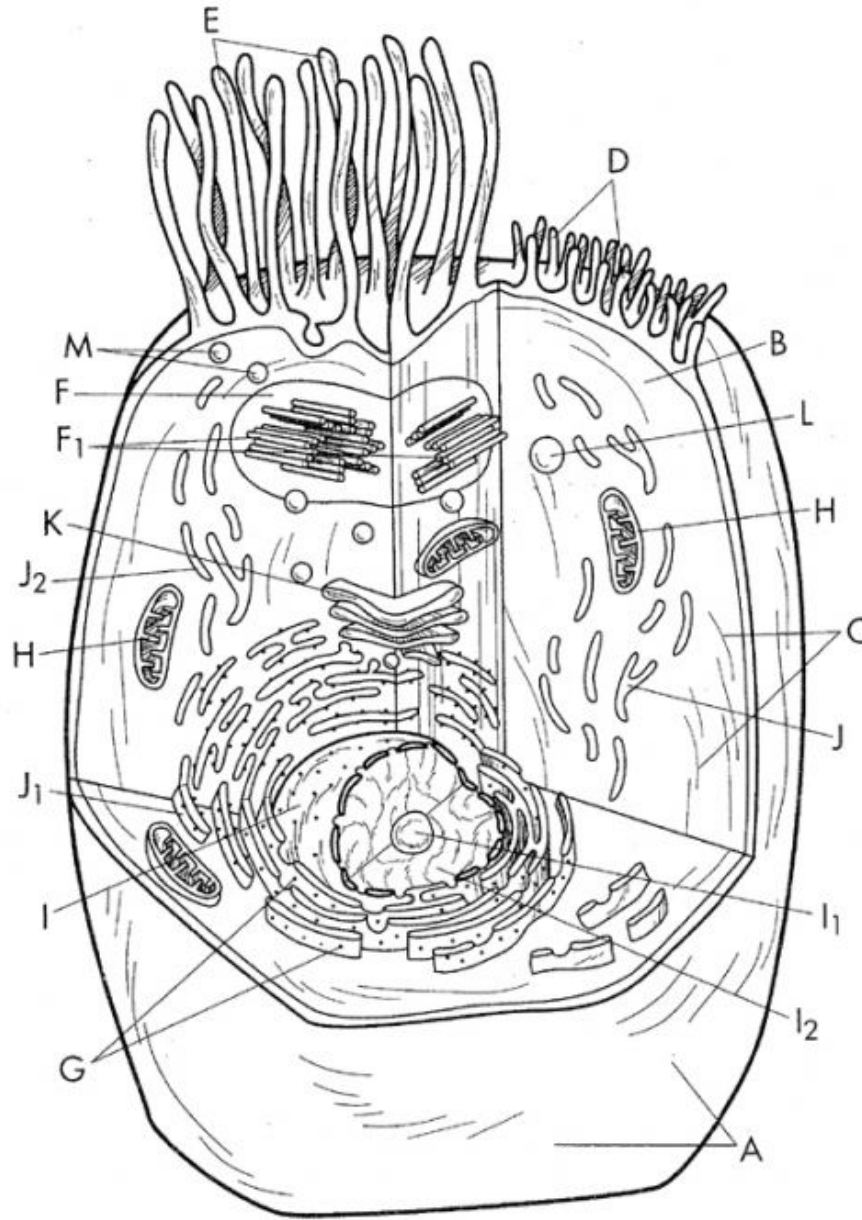


The Animal Cell



The Animal Cell		
○ Cell Membrane.....A	○ Centrioles.....F ₁	○ Endoplasmic Reticulum...J
○ Cytosol (Cytoplasm)....B	○ Ribosomes.....G	○ Rough ER.....J ₁
○ Cytoskeleton.....C	○ Mitochondrion.....H	○ Smooth ER.....J ₂
○ Microvilli.....D	○ Nucleus.....I	○ Golgi Body.....K
○ Cilia.....E	○ Nucleolus.....I ₁	○ Lysosome.....L
○ Centrosome.....F	○ Nucleoplasm.....I ₂	○ Peroxisome.....M