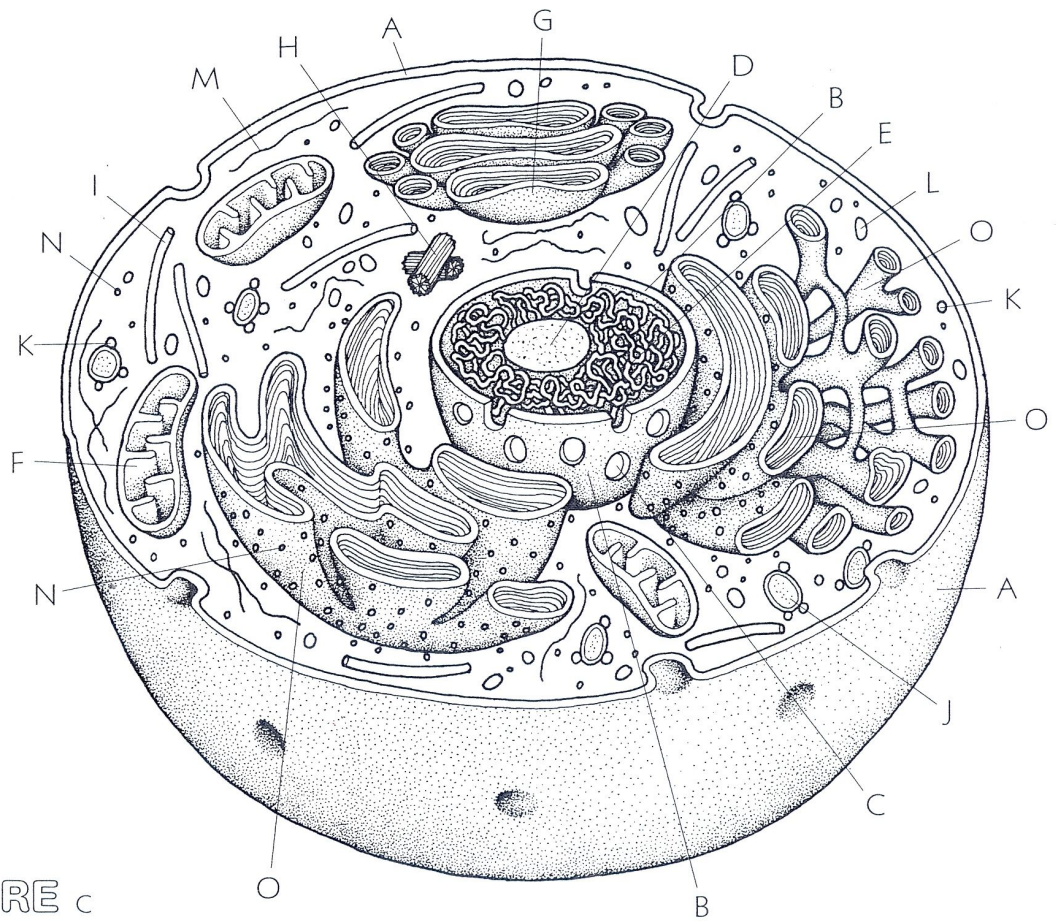
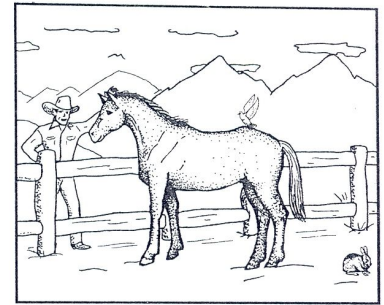
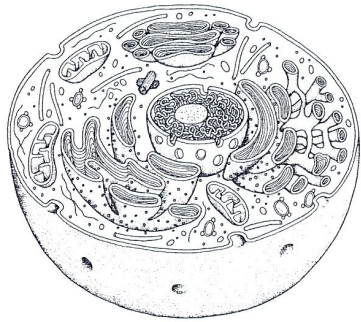


# ANIMAL CELL



## CELL

MEMBRANE A

## NUCLEUS:

NUCLEAR

ENVELOPE B

NUCLEAR PORE C

NUCLEOLUS D

CHROMATIN E

## CYTOPLASM:

MITOCHONDRION F

GOLGI COMPLEX G

CENTRIOLE H

MICROTUBULE I

VACUOLE/VESICLE J

LYSOSOME K

MICROBODY L

MICROFILAMENT M

RIBOSOME N

ENDOPLASMIC RETICULUM O