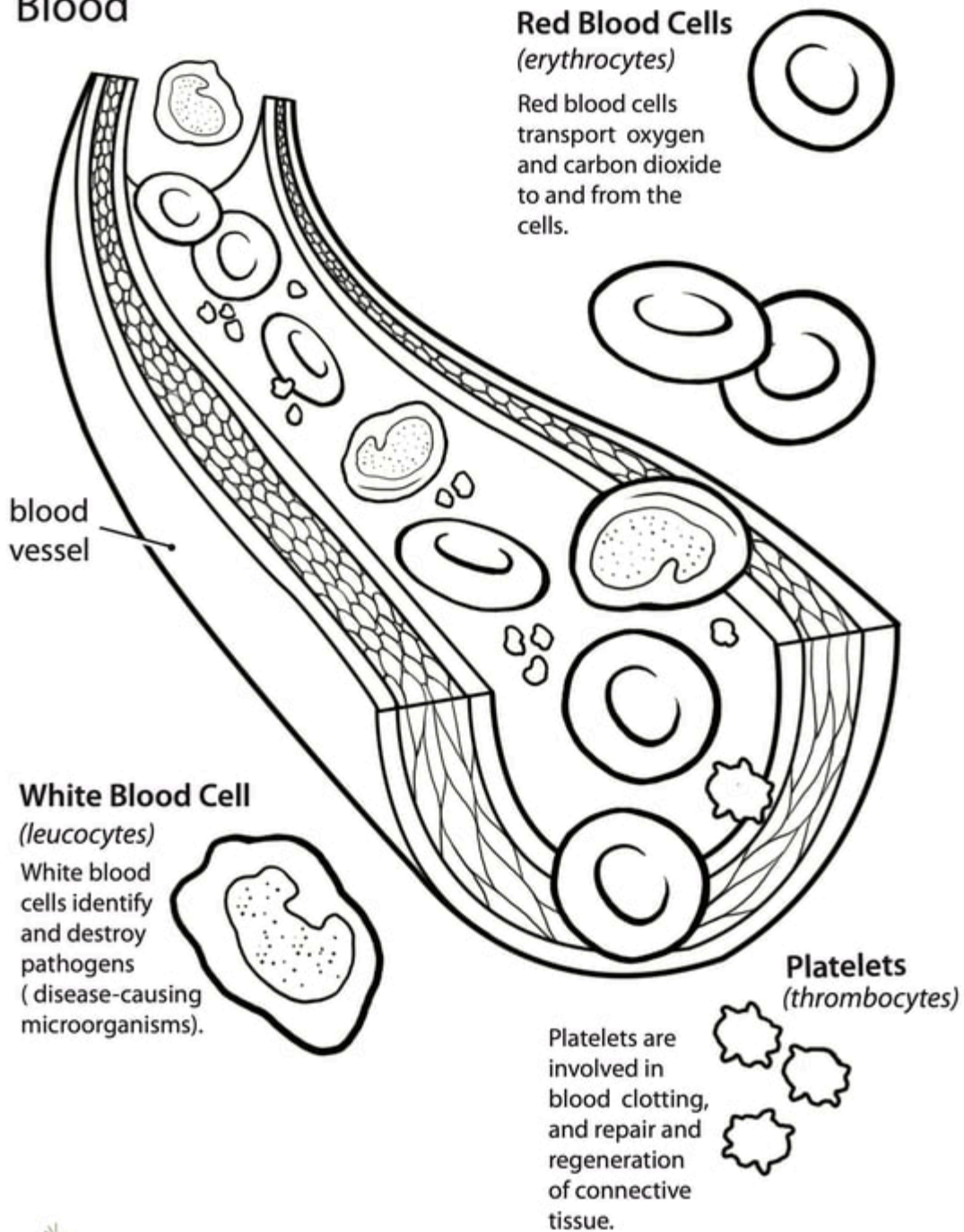


# Blood



## Red Blood Cells (erythrocytes)

Red blood cells transport oxygen and carbon dioxide to and from the cells.

## White Blood Cell (leucocytes)

White blood cells identify and destroy pathogens (disease-causing microorganisms).

## Platelets (thrombocytes)

Platelets are involved in blood clotting, and repair and regeneration of connective tissue.