

5. Figure 9-2 is a diagram of the various endocrine organs of the body. Next to each letter on the diagram, write the name of the endocrine-producing organ (or area). Then select different colors for each and color the corresponding organs in the illustration. To complete your identification of the hormone-producing organs, name the organs (not illustrated) described in items K and L.

K Small glands that ride  
"horseback" on the thyroid

\_\_\_\_\_

L Endocrine-producing  
organ present only in  
pregnant women

\_\_\_\_\_

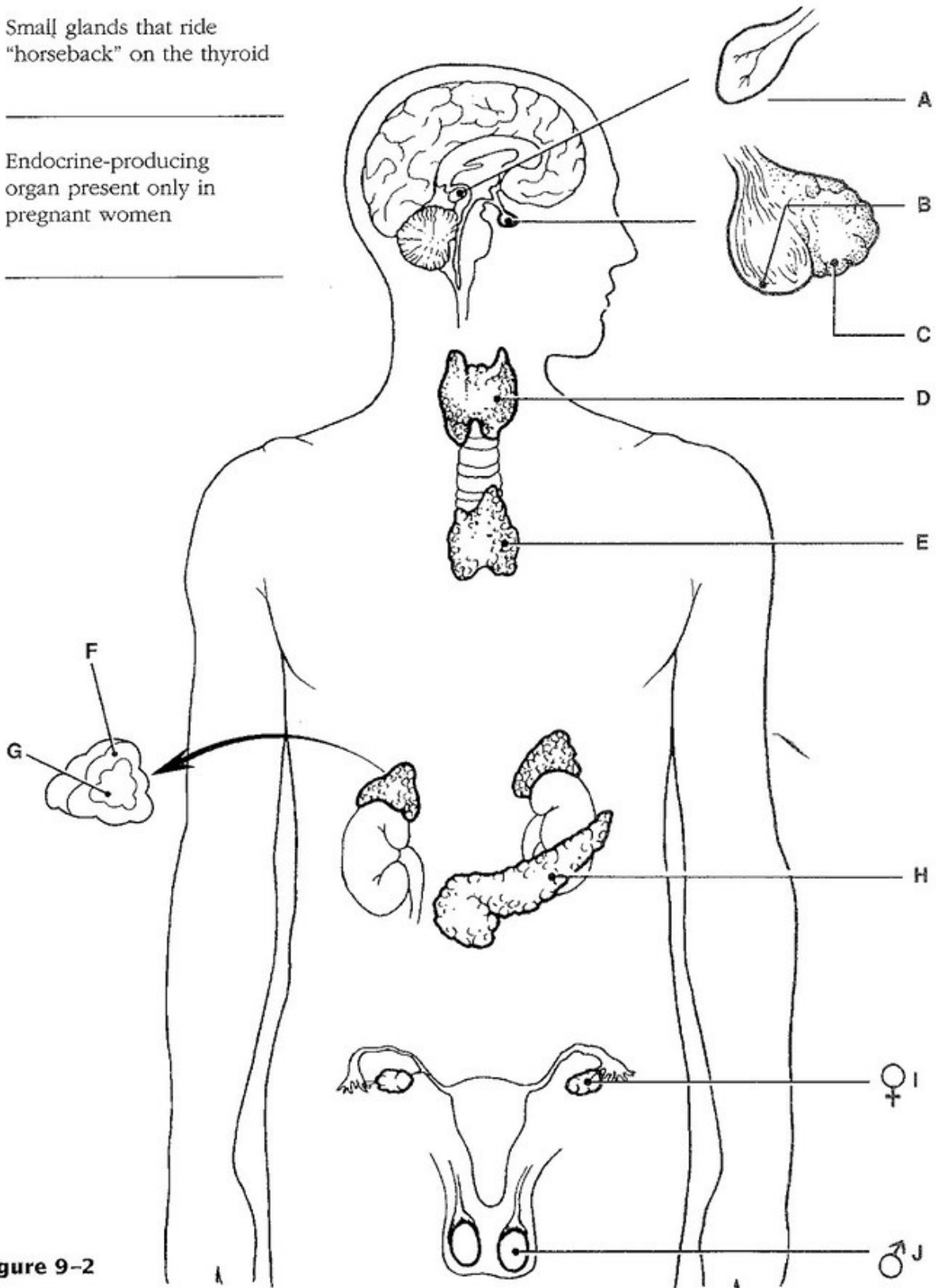


Figure 9-2