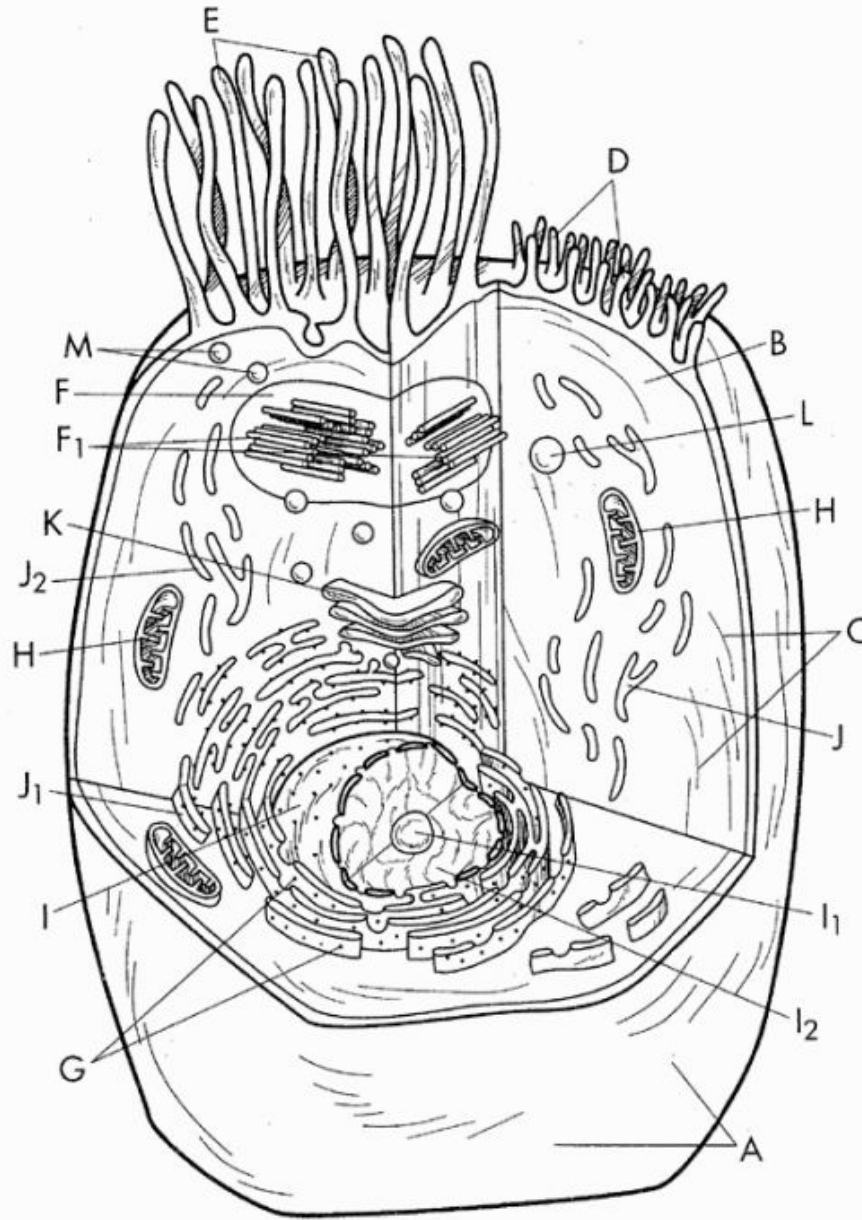


The Animal Cell



- The Animal Cell**
- | | | |
|--|---|---|
| <input type="radio"/> Cell Membrane.....A | <input type="radio"/> CentriolesF ₁ | <input type="radio"/> Endoplasmic Reticulum...J |
| <input type="radio"/> Cytosol (Cytoplasm)....B | <input type="radio"/> Ribosomes.....G | <input type="radio"/> Rough ER.....J ₁ |
| <input type="radio"/> CytoskeletonC | <input type="radio"/> Mitochondrion.....H | <input type="radio"/> Smooth ERJ ₂ |
| <input type="radio"/> MicrovilliD | <input type="radio"/> Nucleus.....I | <input type="radio"/> Golgi BodyK |
| <input type="radio"/> Cilia.....E | <input type="radio"/> NucleolusI ₁ | <input type="radio"/> LysosomeL |
| <input type="radio"/> CentrosomeF | <input type="radio"/> NucleoplasmI ₂ | <input type="radio"/> PeroxisomeM |