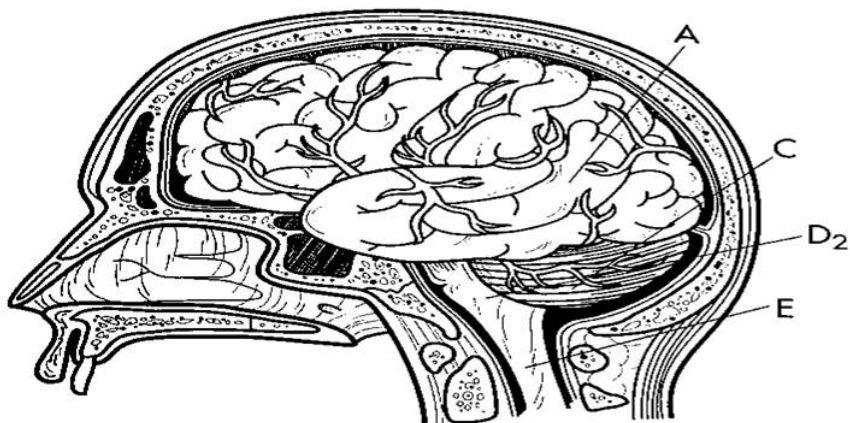
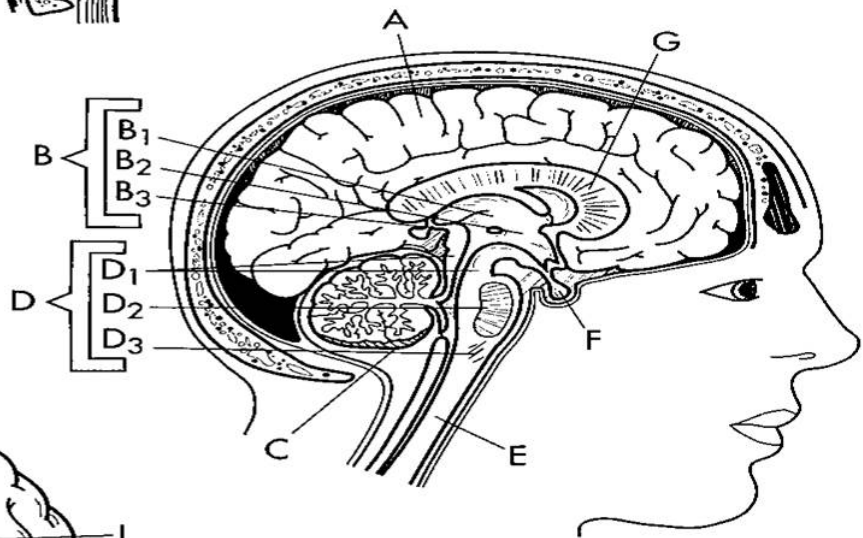


**OVERVIEW OF THE BRAIN**



- Cerebrum            A
- Diencephalon    B
- Thalamus        B<sub>1</sub>
- Hypothalamus   B<sub>2</sub>
- Epithalamus    B<sub>3</sub>
- Cerebellum       C
- Brain stem        D
- Midbrain        D<sub>1</sub>
- Pons             D<sub>2</sub>



- Medulla oblongata    D<sub>3</sub>
- Spinal cord           E
- Pituitary gland        F
- Corpus callosum      G
- Olfactory bulbs       H
- Cranial nerves        I

