

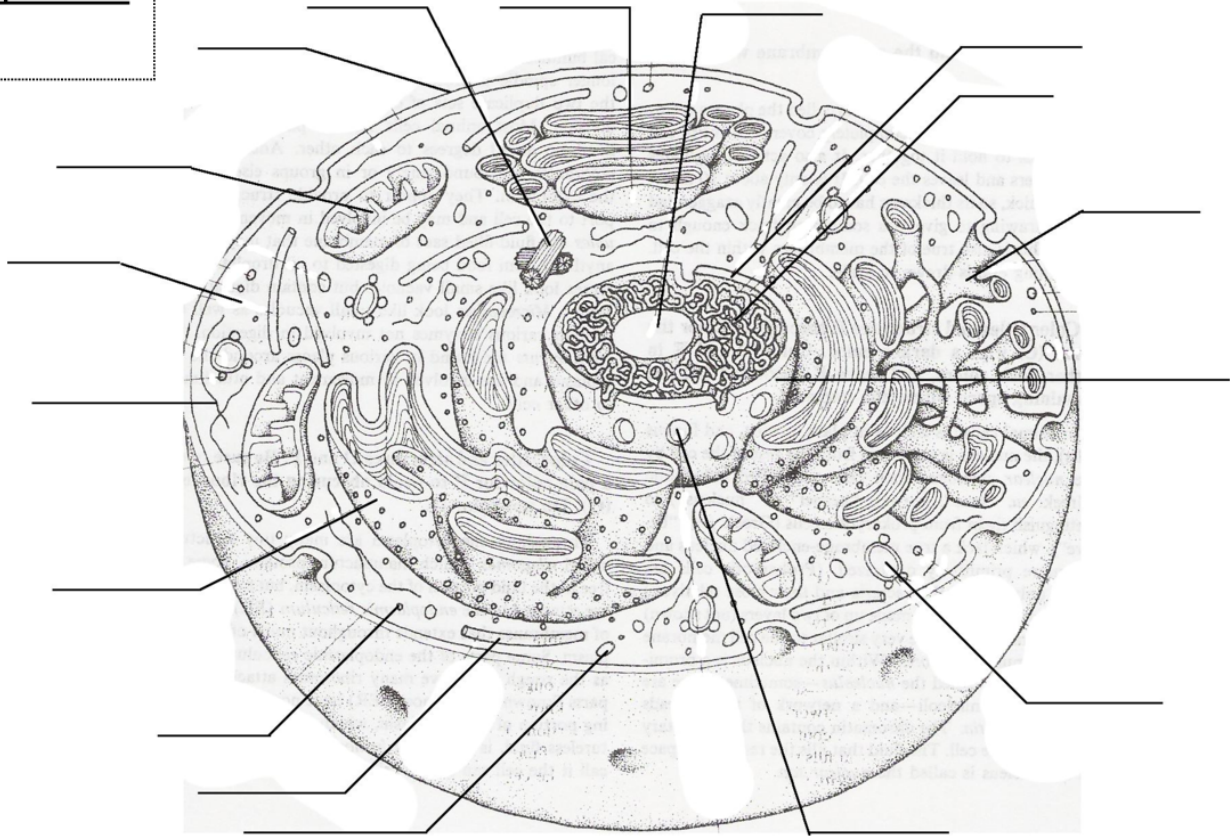
Label and Color the Animal and Plant Cells:

Name: \_\_\_\_\_

Label each cell using all the terms in the boxes, then color each structure in a different color. Beside each structure's name in the boxes, either write the color you used or draw a line through it using that color.

|                        |                 |                              |            |
|------------------------|-----------------|------------------------------|------------|
| Cell (plasma) membrane | Chromatin       | Lysosome                     | Ribosome   |
| Nucleus                | Cytoplasm       | Microtubule                  | Centrioles |
| Nuclear envelope       | Mitochondrion   | Microfilament                |            |
| Nuclear pore           | Golgi Apparatus | Smooth Endoplasmic Reticulum |            |
| Nucleolus              | Vacuole         | Rough Endoplasmic Reticulum  |            |

**Type of Cell:**  
 \_\_\_\_\_



Cell (plasma) membrane: \_\_\_\_\_

Chromatin: \_\_\_\_\_

Nucleus: \_\_\_\_\_

Nucleolus: \_\_\_\_\_

Nuclear pore: \_\_\_\_\_

Nuclear envelope: \_\_\_\_\_

Lysosome: \_\_\_\_\_

Ribosome: \_\_\_\_\_